



**Wine Club**  
**FEBRUARY 2010**



**Happy Valentine's Day!**

**BRING YOUR VALENTINE** to Kunde Family Estate on Saturday, February 13 and Sunday, February 14. We will be offering complimentary wine tasting and sweet treats for club members and their guests from 11am-4 pm. No RSVP needed.

On Sunday, we have a private food and wine pairing beginning at 1 pm. Enjoy a special menu created by Preferred Sonoma Caterers and learn about pairing wine and food by local sommelier Sandrew Montgomery. \$40 for club members; \$50 for non-club members. Space is limited. RSVP to Stephanie - stephanie@kunde.com or 707-282-1534

**White Wine of the Month**

**2008 CHARDONNAY - C.S. RIDGE VINEYARD**



**APPELLATION**..... Sonoma Valley  
**VINE AGE**..... 6-13 years  
**AVERAGE YIELD**..... 4 tons per acre  
**CASES PRODUCED**..... 200

**HARVEST DATE**  
September 5 at an average Brix of 26.0°

**WINEMAKER'S COMMENTS**  
High up on C.S. Ridge on the Kunde Family Estate, the views looking down Sonoma Valley can be astounding. On an especially clear day you can see the San Francisco Bay. On the ridge there is a small planting of some special Chardonnay vines, windswept and wildly beautiful. The wines we make from these grapes have a distinct personality, plush and full and a little rustic, just like the hills they are grown on. Grilled salmon or almond-crusted tilapia match nicely with this wine's pear and baked apple flavors. Come on up to the Ridge—the view is great!

TIM BELL, WINEMAKER

**SUGGESTED RETAIL**..... \$26.00  
**CLUB PRICE**..... \$20.80  
**CASE PRICE (12 bottles)** ..... \$218.40

**Sale Wine!**

**2005 MERLOT**  
**SUGGESTED RETAIL**.....\$216/case  
**SUPER SALE PRICE**..... \$72/case

**2005 DUNFILLAN CUVÉE**  
**SUGGESTED RETAIL**.....\$480/case  
**SUPER SALE PRICE**..... \$120/case

**2005 BOB'S RED**  
**SUGGESTED RETAIL**.....\$180/case  
**SALE PRICE**..... \$90/case

Full case purchases only - No mix and match  
Cannot be combined with any other offer - \$1 shipping not applicable

**Rainbow Greetings** photo by member John Kiil



**Red Wine of the Month**

**2007 DUNFILLAN CUVÉE**



**APPELLATION**..... Sonoma Valley  
**VINE AGE**..... 9-17 years  
**AVERAGE YIELD**..... 2.9 tons per acre  
**CASES PRODUCED**..... 290  
**BLEND**..... 52% Syrah, 48% Cabernet Sauvignon

**HARVEST DATE**  
September 26 through October 9 at an average Brix of 25.5°

**WINEMAKER'S COMMENTS**  
Imagine a delicious, rich chocolate truffle filled with a seductive, dark raspberry-flavored center. Close your eyes when you drink the 2007 Dunfillan Cuvée and you'll feel like you're drinking liquid raspberry chocolates. Our delicious blend of Syrah and Cabernet Sauvignon is the perfect foil for duck breast or a big juicy hamburger. Set a few bottles aside for some aging, because this one is still a baby. It doesn't get much better than this!

TIM BELL, WINEMAKER

**SUGGESTED RETAIL**..... \$40.00  
**CLUB PRICE**..... \$32.00  
**CASE PRICE (12 bottles)** ..... \$336.00

## Make Friday Nights Movie Night at Kunde Family Estate

\$20/PERSON INCLUDES A GLASS OF WINE AND TICKET TO THE MOVIE IN OUR AGING CAVES. RESERVATIONS ARE REQUIRED AND SPACE IS LIMITED. SIGN UP TODAY AT [EVENTS@KUNDE.COM](mailto:EVENTS@KUNDE.COM) OR 707-282-1534.

### FRENCH KISS



**February 19**

*starring  
Meg Ryan  
and  
Kevin Kline*

*Rated PG-13*

When Kate's fiance calls her from Paris to call off their wedding, she boards a plane to get him back. Sitting next to petty French thief Luc Teyssier, he hides a stolen necklace in her bag. Her bag is stolen and Kate and Luc head to Cannes -- Luc to find the necklace and Kate to get Charlie back. Along the way, Kate and Luc begin having feelings for each other.

### MONDOVINO



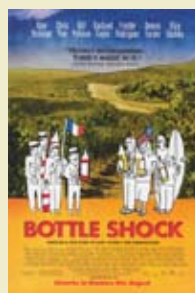
**March 12**

*a documentary  
by  
Jonathan  
Nossiter*

*Rated PG-13*

This film explores the impact of globalization on the various wine-producing regions, and the influence of critics like Robert Parker and consultants like Michel Rolland in defining an international style. It pits the ambitions of large, multinational wine producers, in particular Robert Mondavi, against the small, single estate wineries who have traditionally boasted wines with individual character driven by their terroir.

### BOTTLE SHOCK



**April 16**

*partially  
filmed at  
Kunde Family  
Estate*

*Rated PG-13*

In 1976, Steven Spurrier, a sommelier in Paris, comes to the Napa Valley to take the best he can find to Paris for a blind taste test against French wine. He meets Jim Barrett, whose Chateau Montelena is mortgaged to the hilt as Jim perfects his chardonnay. As Spurrier organizes the "Judgment of Paris," Jim doesn't want to participate while his son Bo knows it's their only chance.

### BIG NIGHT



**May 7**

*starring  
Tony Shalhoub  
and  
Stanley Tucci*

*Rated R*

Primo and Secondo are two brothers who have emigrated from Italy to open an Italian restaurant in America. Primo is brilliant in his culinary genius, but determined not to make the routine dishes that customers expect. Secondo tries to keep the restaurant financially afloat, despite few patrons. To stay in business, the brothers bring in a big-time jazz musician to play a special benefit at their restaurant. The feast of a lifetime for the brothers' big night.

## 2010 Hike Schedule

### HIKE AND TASTE WITH BILL MYERS

FEBRUARY 6

APRIL 3

JUNE 19

AUGUST 7

NOVEMBER 6

DECEMBER 11

\$25/person includes wine tasting.  
A portion of the hike fee will be donated  
to the Sonoma Ecology Center.

### ECO-TOUR DOG HIKE WITH JEFF KUNDE

MARCH 27

MAY 15

OCTOBER 9

### 4TH OF JULY DOGGIE CELEBRATION

### WITH JEFF KUNDE

JULY 3

\$45/person includes wine tasting and lunch. A portion  
of the hike fee will be donated to Canine Companions  
and the Sonoma County Humane Society.

### HARVEST ECO-HIKE WITH JEFF KUNDE

SEPTEMBER 18

\$60/person includes wine tasting and lunch.  
A portion of the hike fee will be donated  
to the Sonoma Ecology Center.

## Save the Date



FEBRUARY 13 AND 14

Valentine's Day at Kunde Family Estate

MARCH 13

New Release Pick-Up Party

MARCH 20 AND MARCH 21

Savor Sonoma Valley

APRIL 24

Cycle & Sip with Jeff Kunde

MAY 2

Winemaker's Lunch with Tim Bell at Safari West

MAY 9

Mother's Day and Chardonnay

MAY 29

Tunes on the Terrace

JUNE 26

Lobster Feed

JULY 8

New Release Pick-Up Party

AUGUST 14

Blending Seminar in the Aging Caves

SEPTEMBER 11

New Release Harvest Pick-Up Party

OCTOBER 30

HalloWinemaker's Dinner in the Haunted  
Aging Caves with Tim Bell

NOVEMBER 26 AND NOVEMBER 27

Holiday Open House

DECEMBER 4

New Release Pick-Up Party

*To RSVP for club events, contact Erin, 707-282-1532 or [erin@kunde.com](mailto:erin@kunde.com)*

*To RSVP for the hikes, contact Stephanie, 707-282-1534 or [stephanie@kunde.com](mailto:stephanie@kunde.com)*